

The Role of Interventional Radiology in Solid Organ Transplant

Charles Sanyika



Wits University
Donald Gordon
Medical Centre
Patient-centred. Independent. Academic.

MEDICLINIC 



Interventional radiology

- Minimally invasive
- Imaging guided
- Diagnostic
- Therapeutic
- Procedures

IR in organ transplantation

Pre transplant

Post transplant

Early or late

Pre transplant

Recipient

Optimisation

Reduce risk of post op
complications

Post transplant



Complications



Early <30 days



Late >30 days

Pre transplant

Liver transplant

Portal vein recanalization –
trans splenic

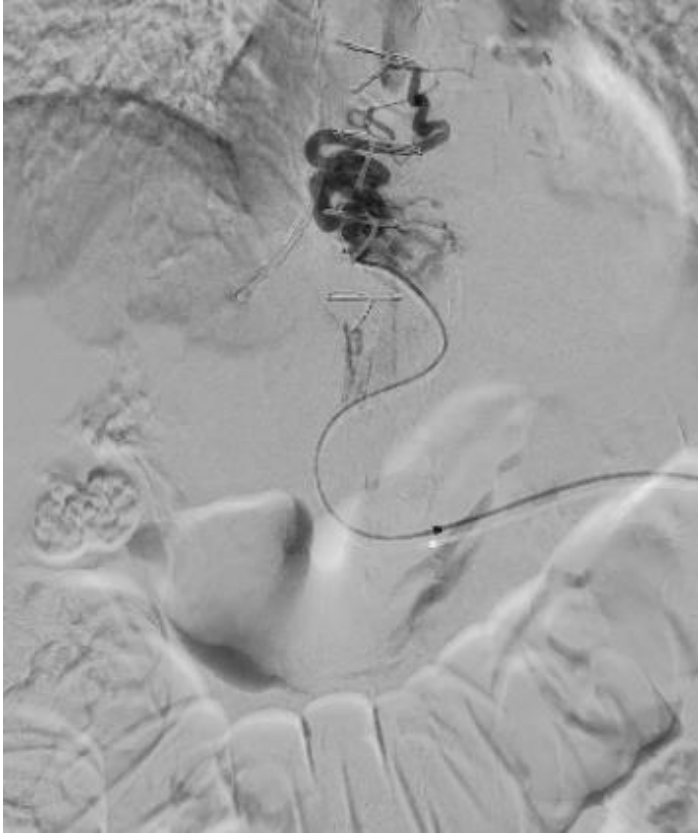
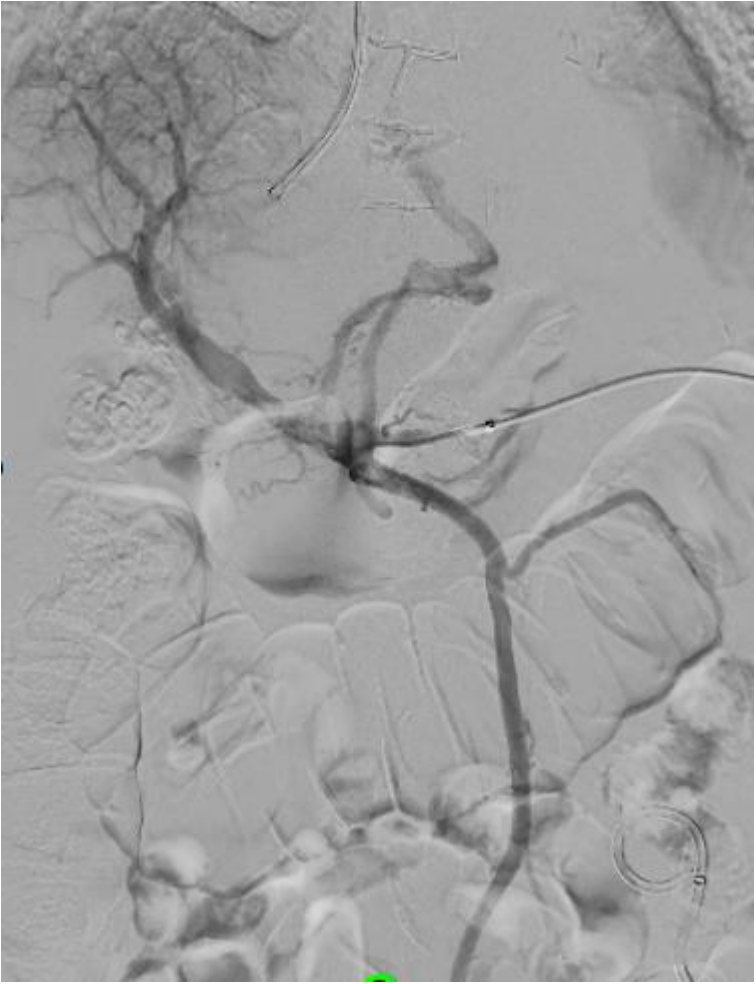
Transjugular Intrahepatic
Porto Systemic shunt (TIPS)

Pre kidney transplant

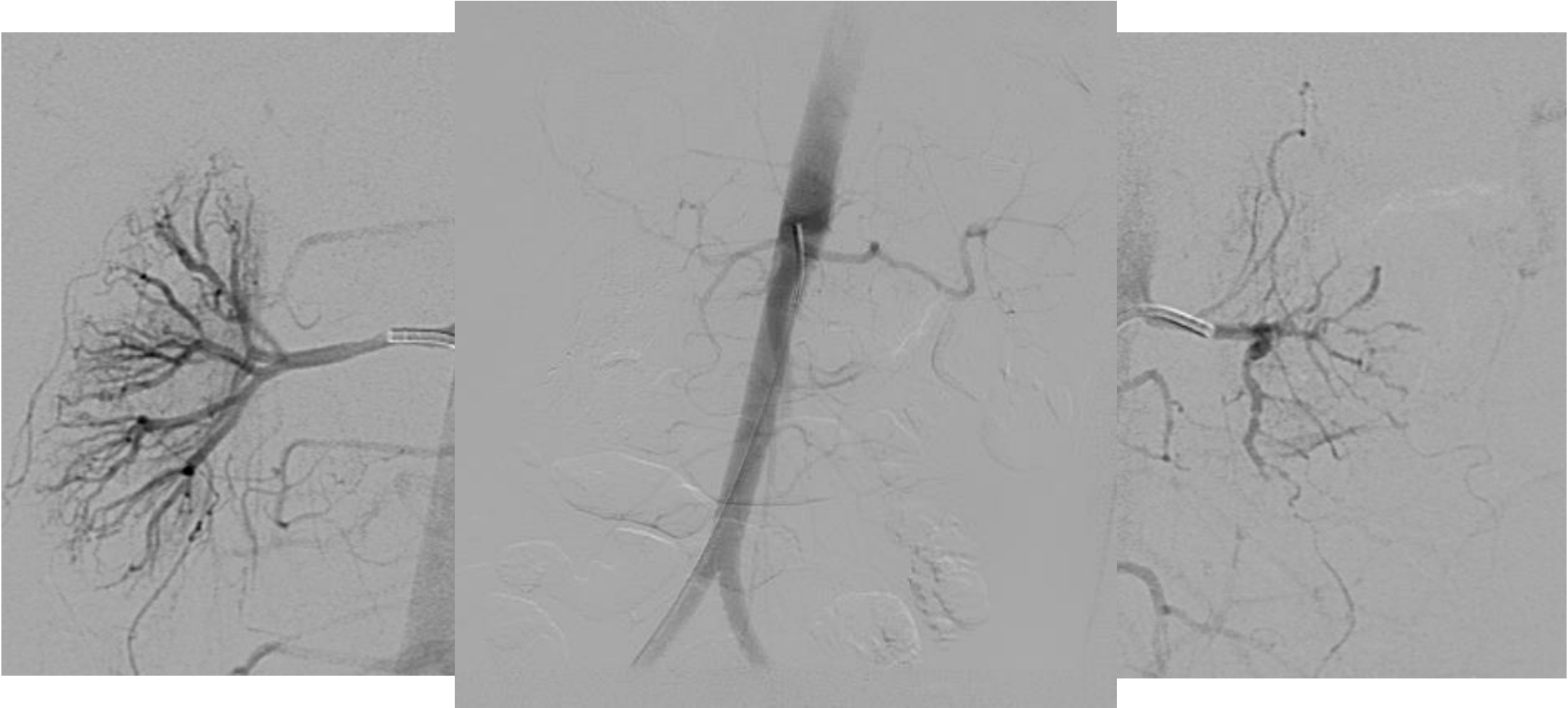
Malignant hypertension

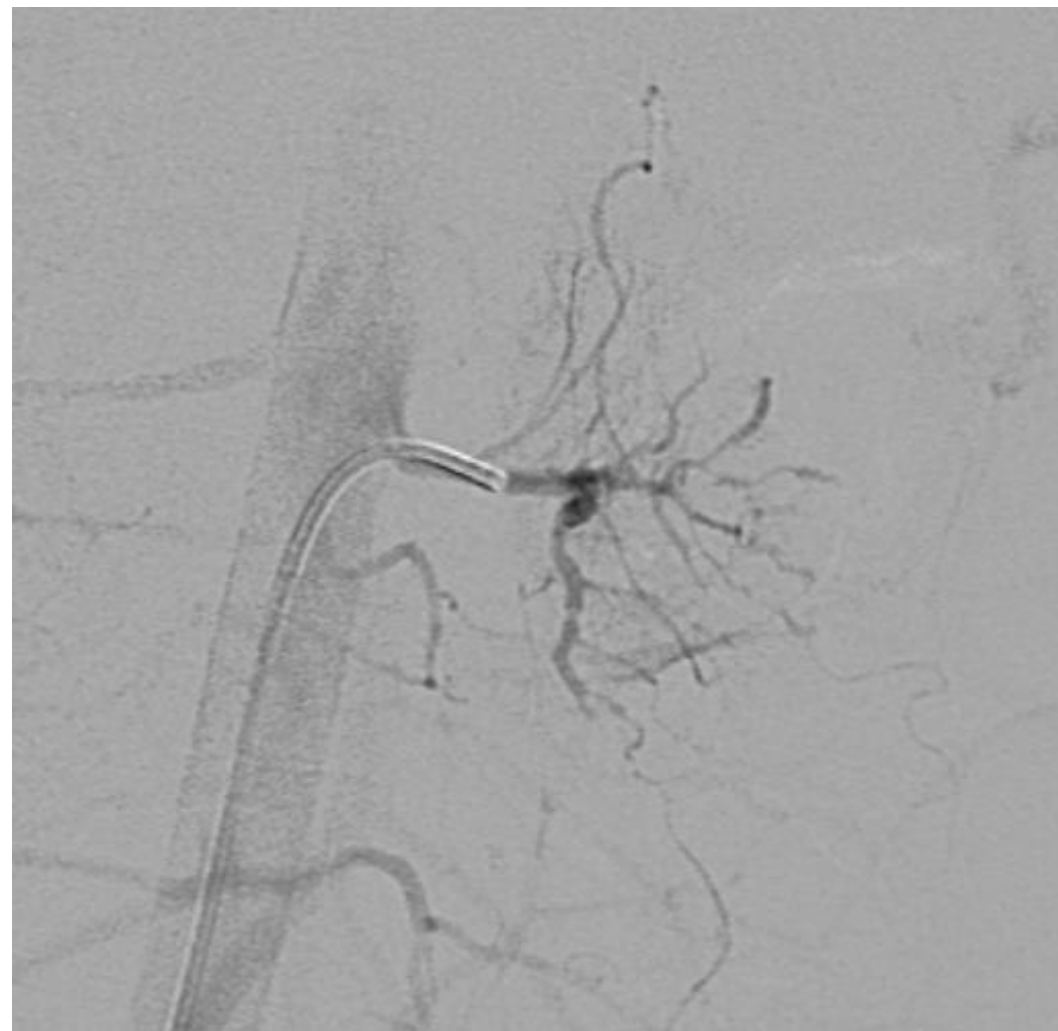
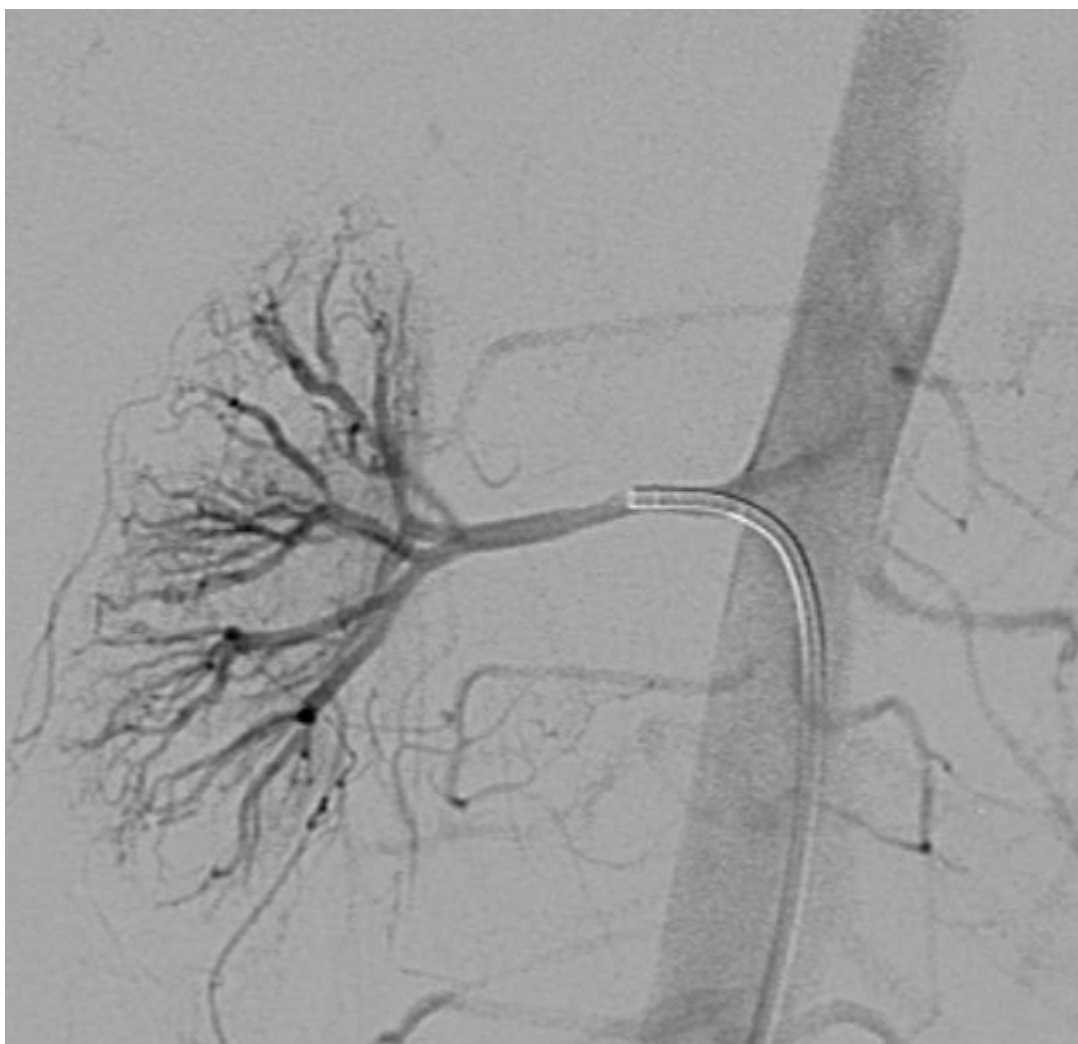
Bilateral renal artery
embolization

Medical bilateral
nephrectomy



Medical bilateral nephrectomy







Post transplant

Liver

Complications

Rejection – biopsy

Biliary

Arterial

Portal vein

Hepatic venous outflow

A diagram consisting of a large blue rectangle on the left with a folded bottom-right corner, and three rounded rectangular boxes stacked vertically on the right. The blue rectangle is labeled 'Biliary'. The top blue box is labeled 'Leak', the middle green box is labeled 'Strictures', and the bottom green box is labeled 'Retained'.

Biliary

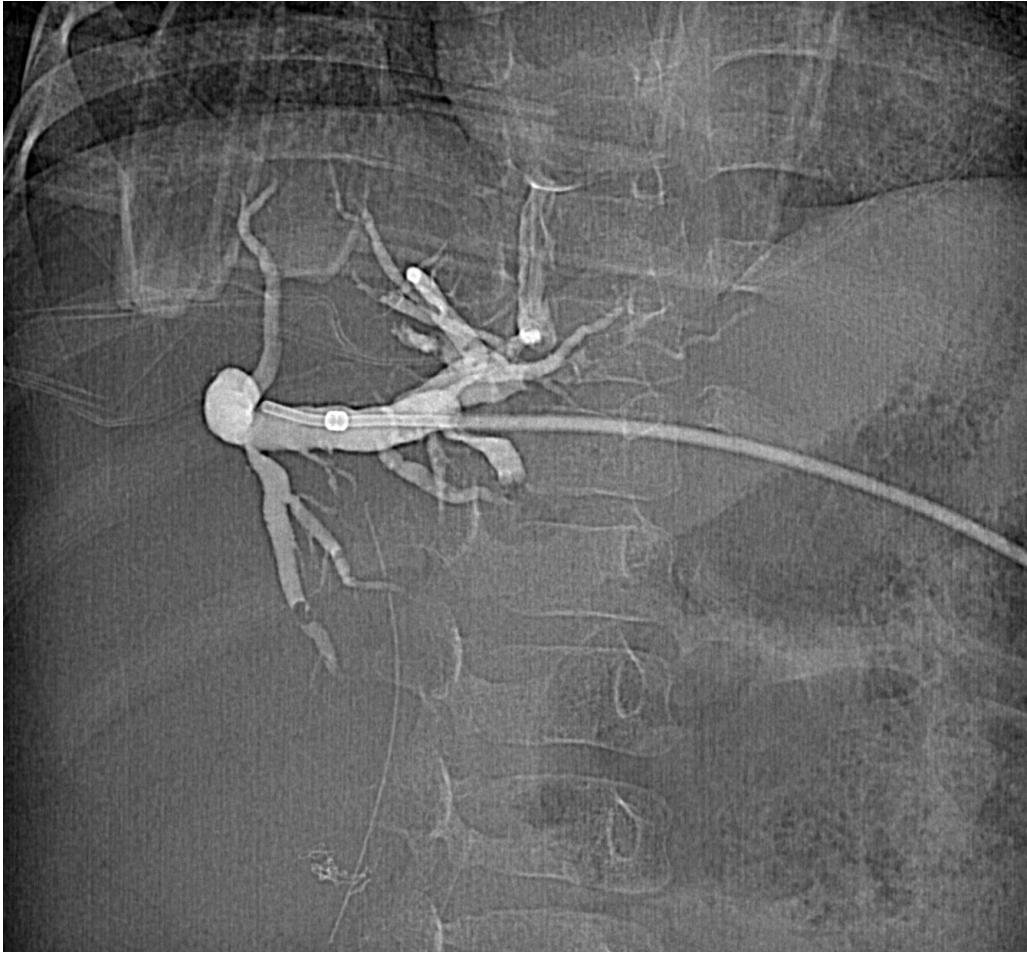
Leak

Strictures

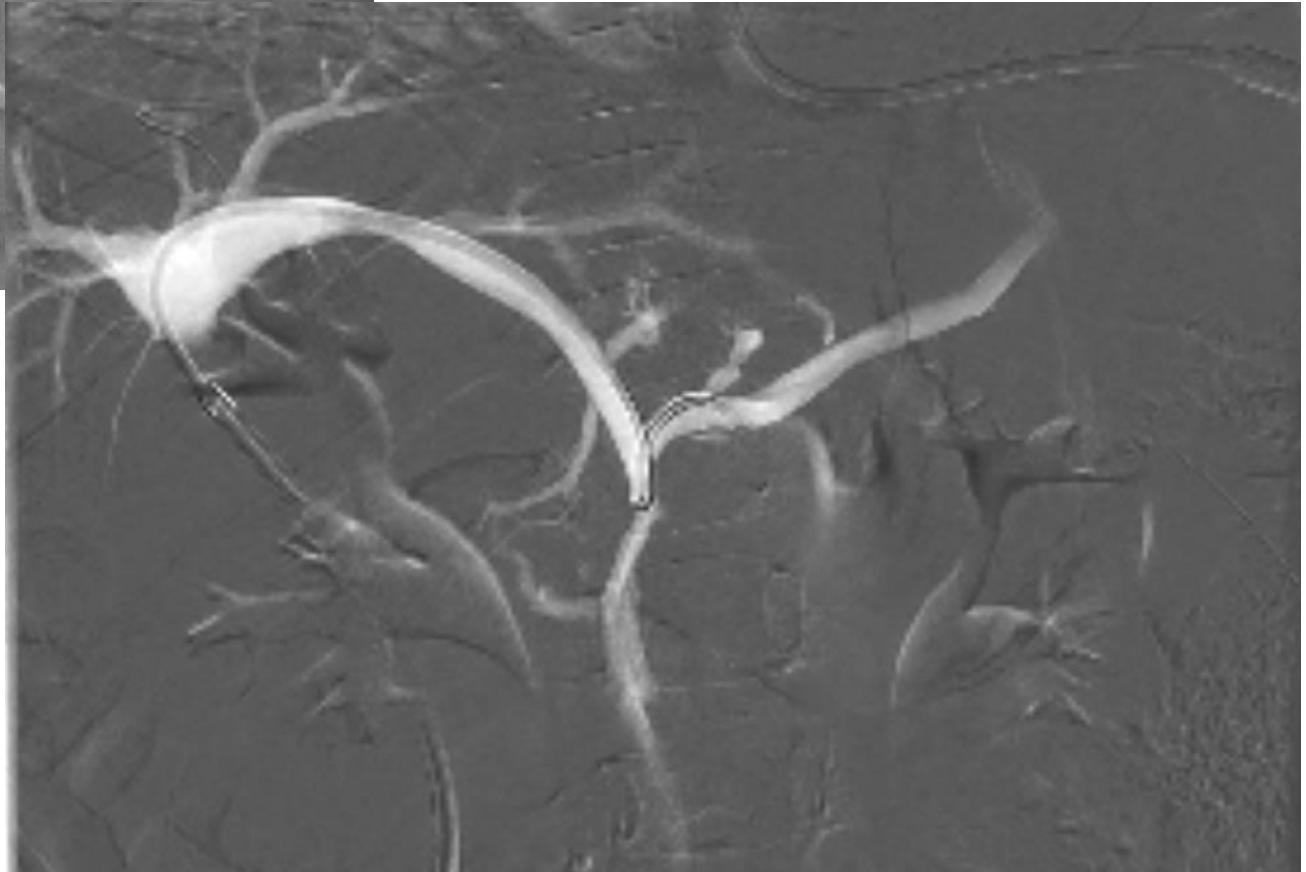
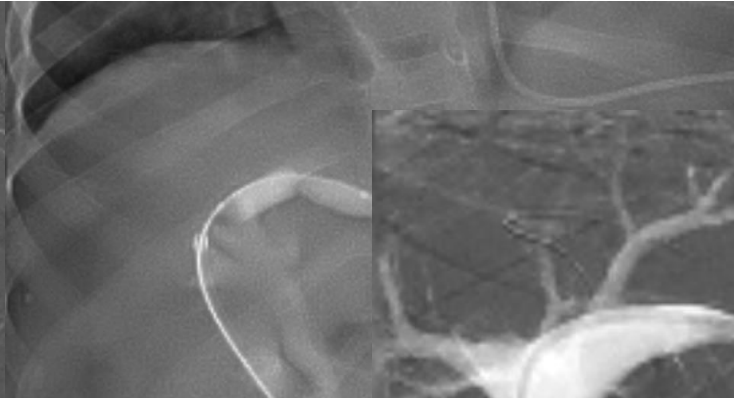
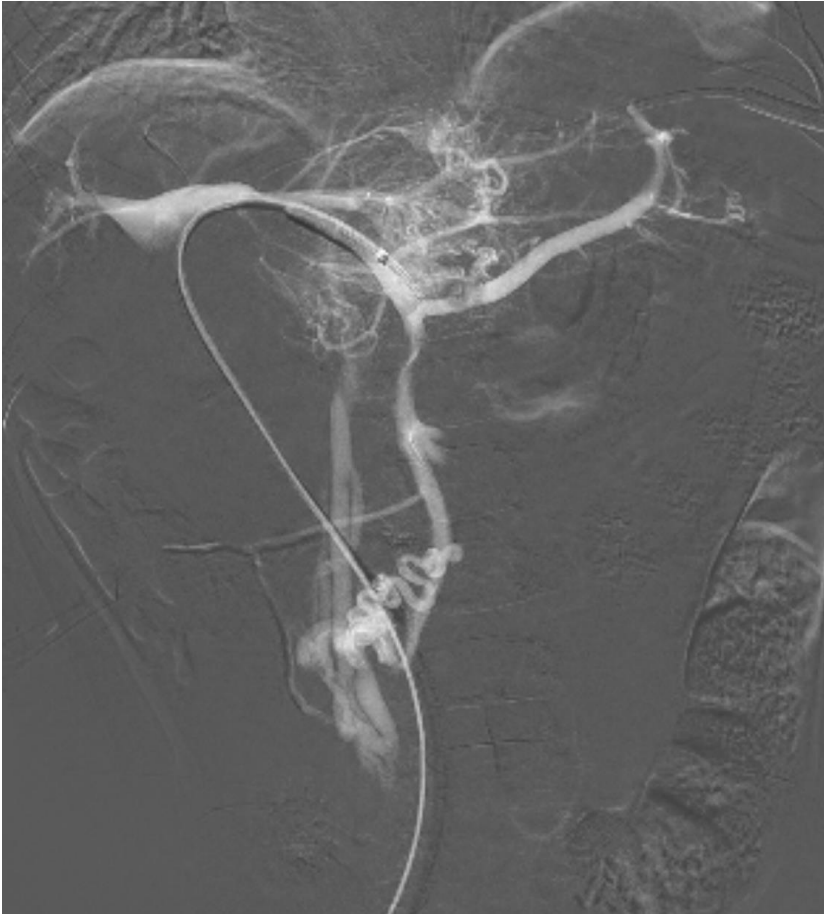
Retained

Bile leak

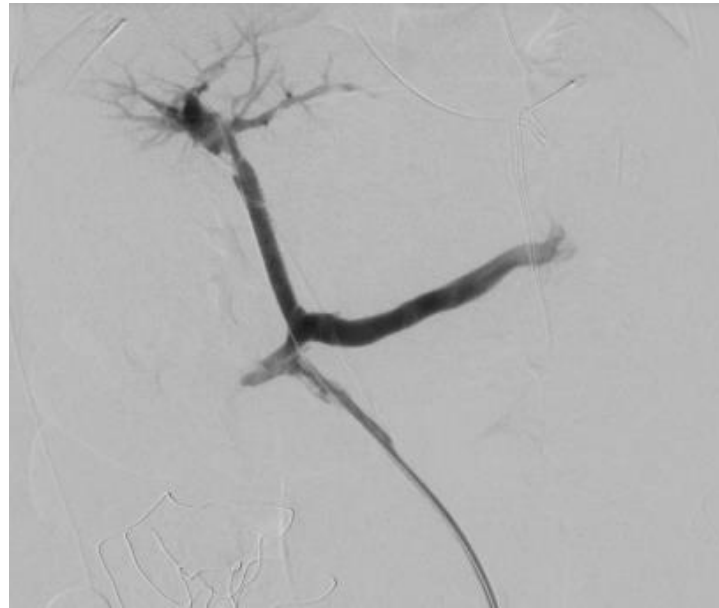
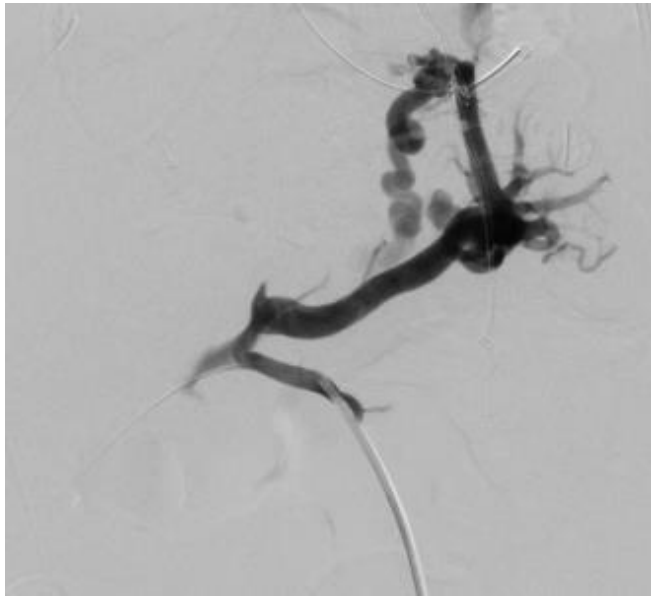




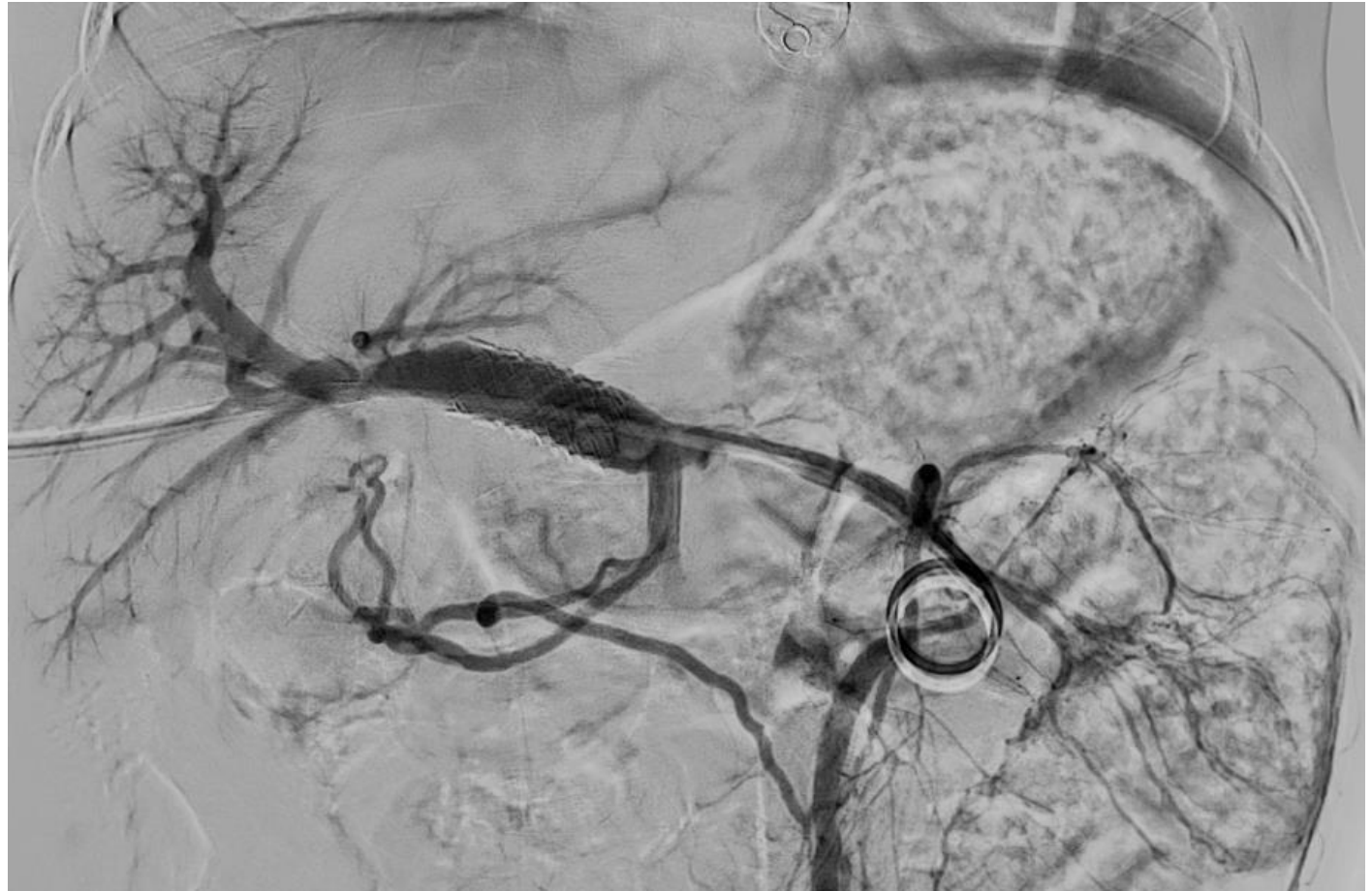
Portal vein stenosis



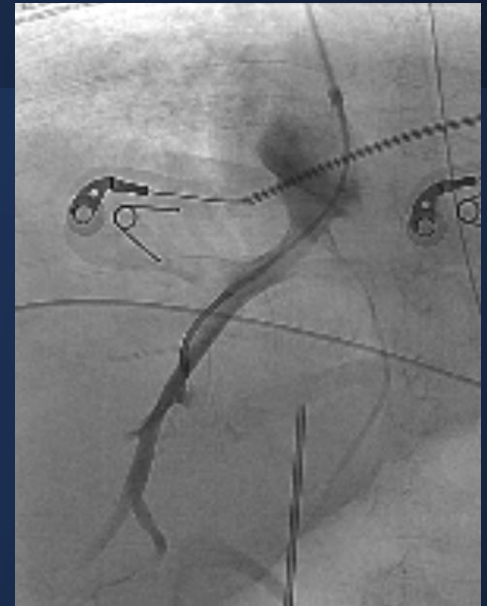
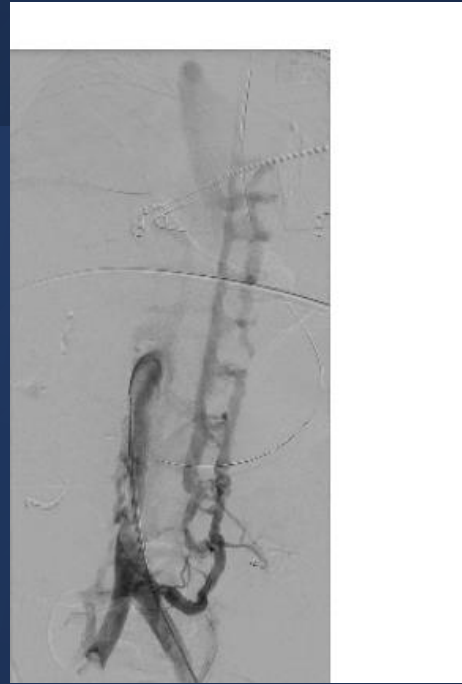
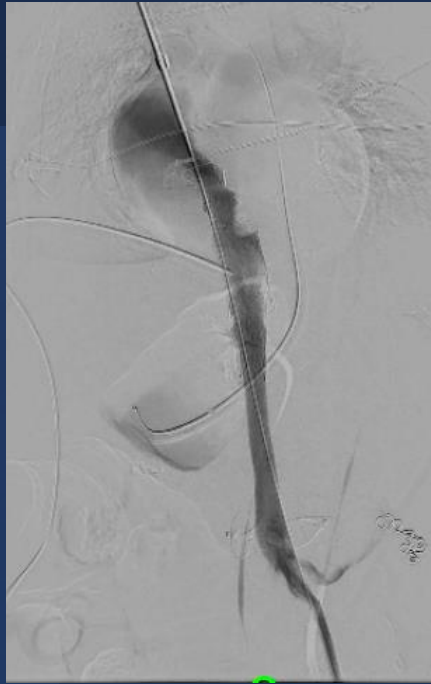
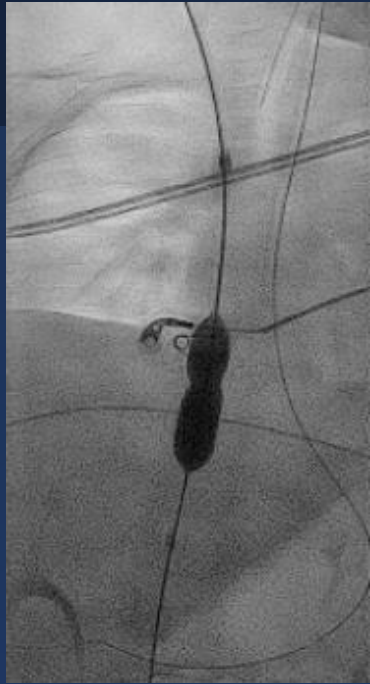
Early portal vein thrombosis



Late portal vein thrombosis



Venous outflow obstruction



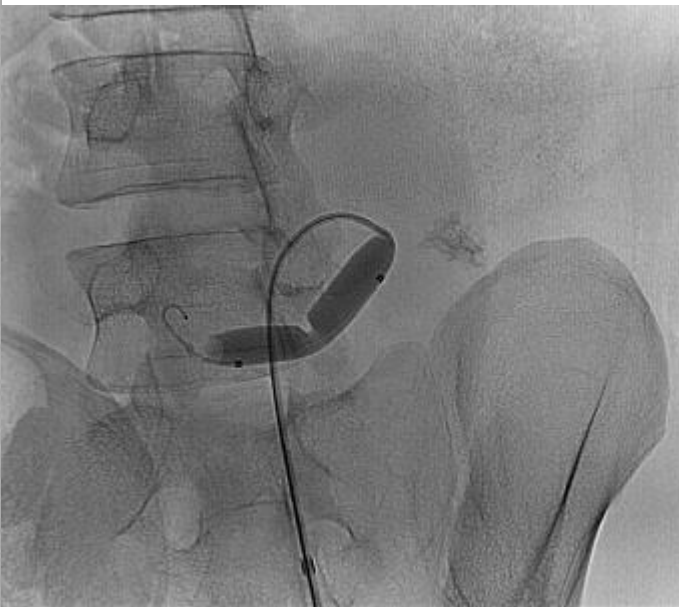
Post transplant

Kidney

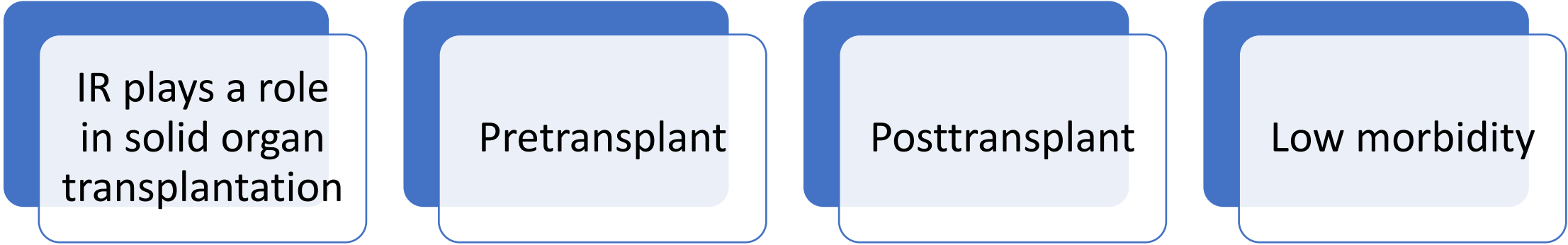
Ureteric – leak or
obstruction

Renal artery stenosis





Summary



IR plays a role
in solid organ
transplantation

Pretransplant

Posttransplant

Low morbidity

Thank you

ir.sanyika@gmail.com

